

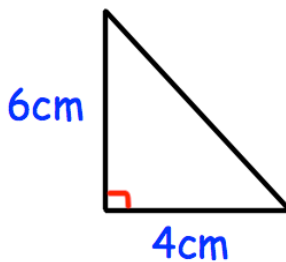
1st January

Corbettmaths

Solve the inequality $3x + 4 \leq 22$

A car decreases in value 10% a year.

If it was bought for £5000, how much will it be worth after 2 years?



Calculate the length of the missing side

The table shows information about how long it takes students to get to school.

Work out an estimate for the mean

Time (t minutes)	Frequency
$0 < t \leq 10$	2
$10 < t \leq 20$	8
$20 < t \leq 30$	12
$30 < t \leq 40$	7
$40 < t \leq 50$	1

David buys 2 DVDs and 2 CDs in a shop and in total they cost £18.

Ellie buys 3 DVDs and 2 CDs in the same shop and they cost £22.

Form two equations and solve to find the cost of each DVD and each CD.

