

Name: _____

Exam Style Questions

Percentage of an Amount Non - Calculator



Ensure you have: Pencil, pen, ruler, protractor, pair of compasses and eraser

You may use tracing paper if needed

Guidance

1. Read each question carefully before you begin answering it.
2. Don't spend too long on one question.
3. Attempt every question.
4. Check your answers seem right.
5. Always show your workings

Revision for this topic

www.corbettmaths.com/contents

Video 234



1. Calculate 80% of 30

$$10\% = 3$$
$$80\% = 24$$

.....24.....
(2)

2. A bag of sugar contains 420g.
A special offer packet contains an extra 15%.

Work out how much extra sugar is in the special offer packet.

$$10\% = 42\text{g}$$
$$5\% = 21\text{g}$$

.....63.....g
(2)

3. A new car is priced at £7500.
In a sale it is reduced by 20%.

Calculate the reduction in price.

$$10\% = \text{£}750$$
$$20\% = \text{£}1500$$

£.....1500.....
(2)

4. Calculate 3% of \$600

$$1\% = \$6$$
$$3\% = \$18$$

\$ 18
(2)

-
5. Mary wins £400.
She gives 50% to her mother.
Mary gives 20% to her sister.
She keeps the rest.

Work out how much each person receives.

Mother £ 200
Sister £ 80
Mary £ 120
(3)

-
6. Barry's salary is £14 000 and he is due to get an increase of 5%.
Calculate how much this increase will be.

$$10\% = £1400$$
$$5\% = £700$$

£ 700
(2)

7. Harry wants to buy a motorbike that costs £600.
He saves 30% of his wages each month.
Each month Harry earns £400.

Calculate how many months it will take Harry to save enough money.

$$10\% \text{ of } £400 = £40$$

$$30\% = £120$$

$$£600 \div £120 = 5 \text{ months}$$

5

.....
(3)

-
8. There are 20,000 fans at a football match.
12% of the fans are women.

Work out how many women attended the match.

$$10\% = 2000$$

$$1\% = 200$$

$$1\% = 200$$

2400

.....
(2)

9. Calculate 75% of 300

$$50\% = 150$$

$$25\% = 75$$

$$\begin{array}{r} 225 \\ \hline \end{array}$$

(2)

10. At Frome International train station, 35% of trains were late in a week. In that week there were 440 trains.

Calculate how many trains were on time.

$$10\% = 44$$

$$10\% = 44$$

$$10\% = 44$$

$$5\% = 22$$

$$\begin{array}{r} + \\ \hline 154 \end{array}$$

$$\begin{array}{r} 440 \\ -154 \\ \hline \end{array}$$

$$\begin{array}{r} 286 \\ \hline \end{array}$$

(3)

11. Work out 98% of 700.

$$10\% = 7$$
$$2\% = 14$$

$$700 - 14$$

$$\dots 686 \dots$$

(2)

12. A company is hosting a charity meal.
800 people work for the company.
It is estimated 70% of the employees will attend.
It is expected that if an employee attends, they will bring a partner.
The cost of attending the meal is £5.

How much money will be raised for charity?

$$70\% \text{ of } 800 = 560$$

$$560 \times 2 = 1120$$

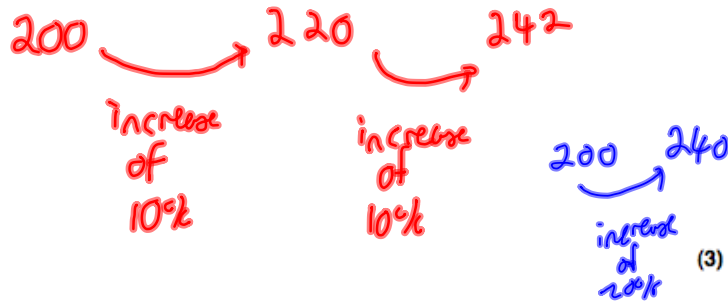
$$1120 \times 5$$

$$\pounds 5600 \dots$$

(4)

13. Darren claims if he increases a number by 10% and increases his answer by 10%, that that would be an increase of 20% overall.

Show Darren is incorrect.



14. Some students sit an exam.
The pass mark is 80%.
There are 40 marks in each test.

Here are the results:

Martin	30 marks	X
Gina	35 marks	✓
Ricky	31 marks	X
Vicky	38 marks	✓
Chloe	29 marks	X

$$80\% \text{ of } 40 = 32$$

Work out fraction of the students passed the exam.

$$\frac{2}{5}$$

.....

(4)

15. Work out 45% of 540.

$$\begin{array}{l} 10\% = 54 \\ 10\% = 54 \\ 10\% = 54 \\ 10\% = 54 \\ 5\% = 27 \end{array}$$

$$\begin{array}{r} 243 \\ \hline \end{array} \quad (2)$$

16. Two glasses contain orange juice.

A 400ml glass is 40% full.

A 300ml glass is half full.

Which class contains less orange juice?

=

The 300ml glass

$$\begin{array}{r} \hline \end{array} \quad (3)$$

17. In a country, people have to pay tax on their salary as shown.

30% on all earnings over £10,000

David earns £16,000.

Calculate how much tax he pays.

$$16000 - 10000 = 6000$$

$$30\% \text{ of } 6000 = 1800$$

$$\begin{array}{r} \pounds 1800 \\ \hline \end{array} \quad (3)$$