

Workout

Question 1: Work out the answers to the following divisions

- (a) $84 \div 4$ (b) $52 \div 2$ (c) $72 \div 3$ (d) $75 \div 5$
(e) $54 \div 3$ (f) $68 \div 4$ (g) $90 \div 5$ (h) $84 \div 6$
(i) $91 \div 7$ (j) $81 \div 3$ (k) $87 \div 3$ (l) $92 \div 4$

Question 2: Work out the answers to the following divisions

- (a) $236 \div 2$ (b) $156 \div 3$ (c) $108 \div 4$ (d) $235 \div 5$
(e) $260 \div 4$ (f) $222 \div 3$ (g) $545 \div 5$ (h) $312 \div 6$
(i) $438 \div 6$ (j) $171 \div 9$ (k) $584 \div 8$ (l) $553 \div 7$
(m) $981 \div 9$ (n) $856 \div 4$ (o) $801 \div 9$ (p) $406 \div 7$

Question 3: Work out the answers to the following divisions

- (a) $2735 \div 5$ (b) $3312 \div 4$ (c) $2664 \div 3$ (d) $6540 \div 5$
(e) $3360 \div 7$ (f) $4902 \div 6$ (g) $7128 \div 9$ (h) $9020 \div 5$
(i) $8208 \div 8$ (j) $7500 \div 6$ (k) $15462 \div 3$ (l) $24353 \div 7$

Question 4: Work out each of the following

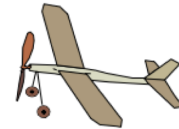
- (a) $154 \div 11$ (b) $192 \div 12$ (c) $195 \div 13$ (d) $345 \div 15$
(e) $374 \div 22$ (f) $416 \div 16$ (g) $385 \div 11$ (h) $648 \div 12$
(i) $1150 \div 25$ (j) $805 \div 35$ (k) $1196 \div 52$ (l) $630 \div 18$
(m) $5580 \div 90$ (n) $2520 \div 105$ (o) $1755 \div 65$ (p) $2904 \div 33$

Question 5: Work out each of the following.
Give each answer as a decimal.

- (a) $82 \div 4$ (b) $75 \div 6$ (c) $12 \div 5$ (d) $4 \div 5$
- (e) $88 \div 5$ (f) $118 \div 8$ (g) $174 \div 12$ (h) $745 \div 20$
- (i) $3406 \div 8$ (j) $4268 \div 6$ (k) $8519 \div 14$ (l) $1854 \div 24$

Apply

Question 1: A toy costs £6.
Over a week, a shop makes £162 from selling the toy.
How many toys were sold?



Question 2: A group of 3 friends take a journey in a taxi.
The total cost of the journey is £72.
The friends share the cost equally.
How much does each person pay?



Question 3: A bookshelf in a classroom is 112cm long.
A teacher has 30 mathematics textbooks, each 4cm wide.



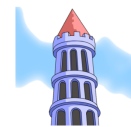
- (a) Can the teacher place all 30 textbooks on the shelf?
(b) What is the maximum number of textbooks that will fit on the shelf?

Question 4: A journey lasts 119 days.
How many weeks is this?

Question 5: Sally is paid £8 per hour.
In one week she is paid £264.
How many hours did Sally work?

Question 6: A school has 5 year groups and 835 students in total.
Each year group has an equal number of students.
How many students are in each year group?

Question 7: A group of 9 friends go on a coach tour.
The total cost for the tour is £648.
Work out the cost per person.



Question 8: The product of Jack's age and Florence's age is 266.
Jack is 14 years old.
How old is Florence?

Question 9: At a conference there are 621 people.
Each table seats 8 people.
How many tables are needed?

Question 10: Daisy is buying rulers.
She has £10.
Each ruler costs 74p
Daisy buys as many rulers as she can.

- (a) How many rulers does Daisy buy?
- (b) How much change should Daisy receive?

Question 11: Miss Jenkins has 18 bags of sweets.
Each bag contains 30 sweets.
Miss Jenkins shares as many sweets as possible equally among the 16 students in her class.



- (a) How many sweets does each student receive?
- (b) How many sweets are left over?

Question 12: Harry hires a car from Holiday Cars for 3 days.
His total bill was £204.
How many miles did Harry drive?

Holiday Cars

£45 per day
20p per mile

Question 13: Leah bought a new car costing £18,000
She paid a deposit of £2,000.
Leah paid the rest of the money over 50 equal monthly payments.
How much was each monthly payment?

Question 14: James hired a holiday cottage for 7 days for £406
Ben hires the same cottage, at the same price per day, for 10 days.
How much will this cost Ben?

Question 15: The product of three numbers is 1001.
The first two numbers are 7 and 11.
What is the third number?

Question 16: There are 1560 sweets in a tub.
Katherine and her friends share the sweets equally.
Each person receives 65 sweets.
How many friends does Katherine have?

Question 17: A theatre has 28 seats in each row.
There are 1036 seats in total.
How many rows are there?